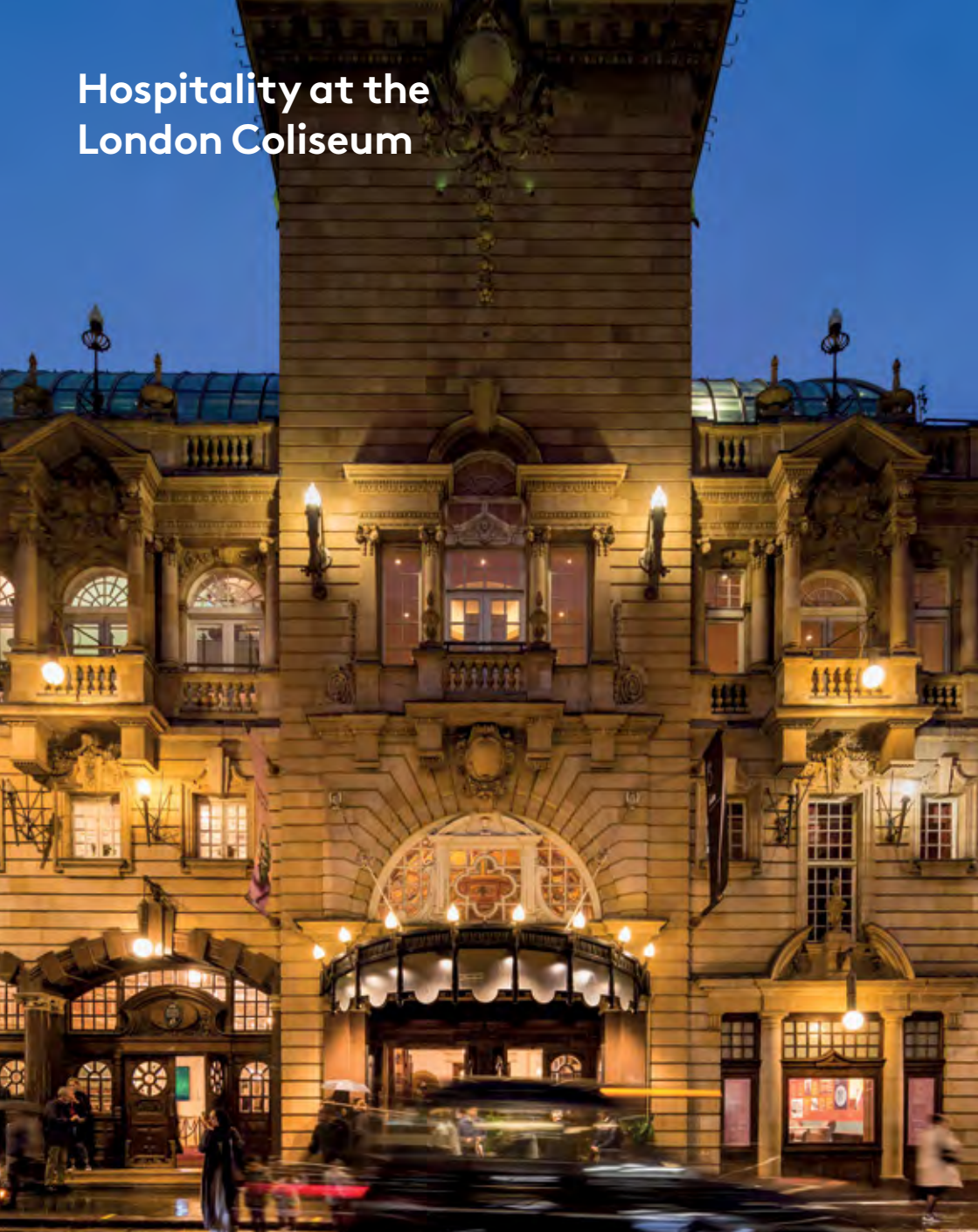


# Hospitality at the London Coliseum



**LONDON COLISEUM**  
Home of English National Opera



With 2,359 seats, the London Coliseum is the largest theatre in London's West End

## London Coliseum, home of English National Opera

The London Coliseum was designed by Frank Matcham in the early 20th Century with the ambition of being the largest and finest “people’s palace of entertainment”.

It became the home of English National Opera (then Sadler’s Wells Opera) in 1968 and is ideally located for corporate and private events in the heart of London’s West End.

Our historic Grade-II listed theatre features a range of spaces perfect for daytime hire, as part of a performance package, and on non-performance evenings for your special event.

Whether you are planning a special celebration, an informal reception or a daytime event, we have a variety of options tailored to your requirements, with a truly bespoke finish.

We look forward to working with you to create your perfect event.

Get in touch with your dedicated Events Team today.

email: [hospitality@eno.org](mailto:hospitality@eno.org)  
call: +44 (0)20 7845 9479





## Ellis Room

A grand space in prime position between the Stalls and Dress Circle.

The Ellis Room, bathed in natural light and offering views over St. Martin's Lane, is perfect for daytime meetings, canapé receptions and private dining.

One of our most popular spaces, the room has a piano as well artwork celebrating the history of ENO and the London Coliseum.



Canapé reception



Boardroom set up

Seated 16

Standing 35

## Royal Retiring Room

Built for the Royal Family to enjoy, this grand room offers seclusion, privacy and a sense of grandeur.

Showcasing Edwardian detail, with beautiful floor to ceiling mirrors, this period room has its own private washroom.

Recently fully furnished by Heals, the Royal Retiring Room also features dedicated access to both the Royal Box and Dress Circle.



Standing reception



Private dining

Seated 10

Standing 25



## Harewood Room

A favourite of our most exclusive patrons, this ornate space is perfect for up to four guests for private dining or drinks reception for six guests.

This beautiful room is perfect for a romantic evening or for those looking to escape the crowds.

This intimate space boasts a private washroom, and unrivalled access to the Stalls.

There is also an option to take over the snug outside the room to create and informal private bar for up to 15 guests.



Standing reception



Private dining

Seated 4

Standing 6

## Laidlaw Bar

A modern and bright space in the Dress Circle, the Laidlaw Bar is the most recently refurbished of our spaces, bathed in natural light with an elegant, fully equipped pewter bar.

Perfect for standing breakfast and daytime events, it is particularly popular for networking events, relaxed drinks receptions and informal book launch events

Please note this space is not available to hire when we have a performance on stage.



Standing reception



Standing reception

Standing 40

## American Bar Restaurant

At the heart of the theatre, tucked away from the bustling crowds, you'll find the American Bar Restaurant, our intimate dining room named for the American Friends of ENO.

Just steps away from the Stalls, our warmly lit restaurant features original Edwardian oak panelling, antique mirrors and a beautiful copper bar, making it a flexible space for larger special occasions.

Using the very best local sourced, fresh produce, Head Chef Mathieu Archipoff crafts inspiring menus, paired with world-class wine selections.

Enjoy a glass of champagne prior to sitting for your starter and main course before the curtain rises. When you return at the interval, your dessert, coffee and liqueur will be waiting at your table, giving you more time to enjoy dinner and less time rushing to make the show.

This versatile space is perfect for private dinners for up to 50 guests or canapé receptions for up to 100 guests.

The adjoining restaurant foyer can be used for a pre-dinner drinks reception, or to increase the capacity of canapé receptions to 150 guests.

We can also partition half of the restaurant to create an extra special private dining space for up to 22 guests.

Seated 50      Standing 100



Canapé reception



Private dining

Pre-theatre dining in the restaurant





## Sky Bar

A truly spectacular space, located on the Upper Circle, the Sky Bar is flooded with natural daylight thanks to its original Edwardian glass roof, offering views of our famous revolving Coliseum globe.

Popular for large parties, product launches and breakfast events,, product events, guests can soak up the theatre atmosphere while enjoying views over St. Martin's Lane.

Hire of the Sky Bar Boardroom is included with Sky Bar hire, offering an additional space for a Green Room or breakout space.

Please note this space is not available to hire when we have a performance on stage.



Standing reception



Private dining

Seated 40   Standing 200   Theatre 70

## Sky Bar Boardroom

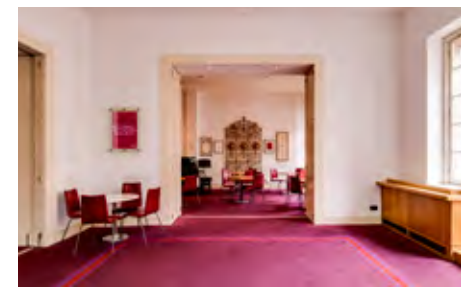
This charming room features the theatre's original antique lift gate, and with French doors overlooking St. Martin's Lane it is perfect for daytime meetings, canapé receptions and private dining experiences.

The Sky Bar Boardroom adjoins the Sky Bar, and can be neatly portioned off from the main bar area, using the integrated bi-fold doors.

Many guests like to rope-and post instead of using the doors, so their guests can soak up the excited buzz from other patrons seeing the show.



Boardroom



Standing reception

Seated 16   Standing 30



## Balcony Bar

With adjoining Clore Space and Trafalgar Room including in hire, the Balcony Bar is a flexible space great for all types of event. Featuring a fully-equipped bar, guests can enjoy a dinner or canapé reception in style.

The Balcony Bar has a lighting rig which can be hired on request, making it perfect for presentations and product launches.

The Clore Space and Trafalgar Room can be neatly partitioned from the main bar to offer break-out spaces.

Please note this space is not available to hire when we have a performance on stage.



Standing reception



Private dining

Seated 50   Standing 120   Theatre 85

## Clore Space

The Clore Space is a warm space, featuring a beautiful Yamaha grand piano.

Idea for meetings, private parties and informal receptions, the room boasts a secret Juliette balcony overlooking the Sky Bar, exclusive access to the Trafalgar Room and bi-fold doors to close it off from the main Balcony Bar space.

Hire of the Trafalgar Room is included, making this a versatile events space, no matter your requirements.



Standing reception



Standing reception

Seated 16   Standing 30



## Trafalgar Room

The Trafalgar Room boasts the best views in the theatre, looking out over St Martin's-in-the-Field, Trafalgar Square and The London Eye.

Throughout the day the space is flooded with natural light, making it popular for both breakfast and lunch meetings. In the evening the backdrop of the twinkling cityscape brings the room to life, making it perfect for entertaining guests in a more casual environment.

Why not book with the Clore Space to create a highly versatile private events space?



Standing reception



Standing reception

Seated 8    Standing 20



## Chairman's Room

Normally open exclusively to ENO Supporters, this exceptional room can be hired for special events. With the atmosphere of an exclusive member's club, two private washrooms, dedicated auditorium access to the Dress Circle and dedicated bar, it really is the perfect space for informal drinks receptions or a private bar for your guests.

The Chairman's Room also features a photo wall of stars from the London Coliseum stage, making it a favourite with our most discerning patrons.



Standing reception



Standing reception

Standing 40



# About ENO

## Our Vision

Lives changed through opera

## Our Mission

English National Opera exists for everyone, creating new experiences with opera that inspires, nurtures creativity and makes a difference.

We take a fresh inspiring approach to opera to reflect the diversity of our culture.

We sing in English.

We encourage creativity throughout the company and our commitment to the future of opera provides a platform to develop outstanding careers.

We connect to audiences through inspiring, accessible, world-class opera and stimulating, creative participation programmes.

## Get in touch

email: [hospitality@eno.org](mailto:hospitality@eno.org)

call: +44 (0)20 7845 9479



Supported using public funding by  
**ARTS COUNCIL  
ENGLAND**

English National Opera is a charitable company limited by guarantee incorporated in England and Wales (Company number 00426792).