



**MASSEY
HALL**



**ROY THOMSON
HALL**

**TECHNICAL
INFORMATION**

**ROY THOMSON HALL
60 Simcoe Street
Toronto, Ontario
M5J 2H5
Tel: (416) 593-4822
Fax: (416) 593-4224**

Stage Information..... pg 2
 Loading Area..... pg 2
 Electrical & Lighting..... pg 3
 Sound System Communication..... pg 5
 Video..... pg 8
 Props..... pg 10
 Dressing Rooms, Lounges, and other Spaces..... pg 11
 Unions..... pg 11

CONTACT

Doug McKendrick
Director of Production
doug.mckendrick@mh-rth.com
416.593.6985

Dan Brooks
Production Coordinator
dan.brooks@mh-rth.com
416.593.0079

Alex Naylor
Production Coordinator
alex.naylor@mh-rth.com
416.593.1189

Megan Paquette
Production Coordinator
megan.paquette@mh-rth.com
416.593.0904

STAGE INFORMATION

The facility is a classical concert hall configuration. It features a trapezoidal shaped stage area with natural hardwood floors. The auditorium is grey concrete with wood paneling in a clear maple finish. Drilling or screwing into the stage floor is not permitted.

The stage contains no masking and minimal stage left and stage right wing space. There is no proscenium. The entrance to the stage is via upstage and downstage double doors.

Due to building regulations the use of indoor pyrotechnics is forbidden.

Stage Dimensions

45-feet wide upstage
62-feet wide downstage
82-feet wide downstage, full apron
41-feet deep at center
28-feet height clearance

LOADING AREA

Loading Dock:

Access must be prearranged, as there is an access gate. Loading ramp is inclined down from street level at an approximate 8-percent grade. Dock is at truck bed level. Two roll-up dock doors provide access to the hall. Loading doors are 100-inches high by 94-inches wide and lead directly on to the stage. Interior restrictions require that any stage material must fit through a 79-inch wide by 95-inch high door to reach the wing area, and 84-inches wide by 101-inches high to access the stage.

Parking Restrictions:

Downtown parking is extremely limited; some production vehicle parking is available at the venue. Arrangements must be made in advance with venue management.

ELECTRICAL & LIGHTING

Power Source

Location.....Stage right
Capacity.....400AMPS
Phase.....3
Voltage.....120/208
Cycles.....60

Location.....Stage left
Capacity.....200AMPS
Phase.....3
Voltage.....120/208
Cycles.....60

Lighting Circuits

Stage system: dimmers as required for house fixtures, plus:

2.4 k Dimmers:

48 in a Strand Supervisor rolling rack stage right

Others accessible through permanent circuit installations throughout auditorium

Protocol: DMX 512

Pathport C-Series Nodes with 2 DMX ports

2 in the lighting control booth

1 in the followspot booth

1 in the Stage manager's booth, stage right

2 in the projection booth, centre, rear house

2 parterre seating, house left

2 parterre seating, house right

2 down stage right wing

1 offstage left utility room

Others in attic spaces in the auditorium, integral to circuit panels

Connectors

New-style twist lock - 20 Amps, 120 Volt

Lighting Console

Grand MA2 Full-size. Located in the house control booth on the mezzanine level and is operated by house technicians. MA on PC Backup with NPU located Stage Left.

Touring Console

Touring lighting consoles are typically located house left at the rear of the left parterre seating section. This position offers a clear view of the stage and is supported with ClearCom.

LIGHTING POSITIONS

Permanent Installation:

FOH positions:

House Right
6 – 10-degree Source Four
2 – 5-degree Source Four

Centre
4 – 5-degree Source-Four

House left
6 - 10 degree Source Four
2 - 5 degree Source Four

Spotlights:

2 – 2.5K Xenon Gladiator IIs w/ 6 colour frames in a followspot booth house centre. *Throw is 130'*

On-stage Lighting Positions:

40 Robe DL7S Profile Moving Lights

60 ETC Source 4 Luster 2 (Orchestra Wash focus cannot be altered)

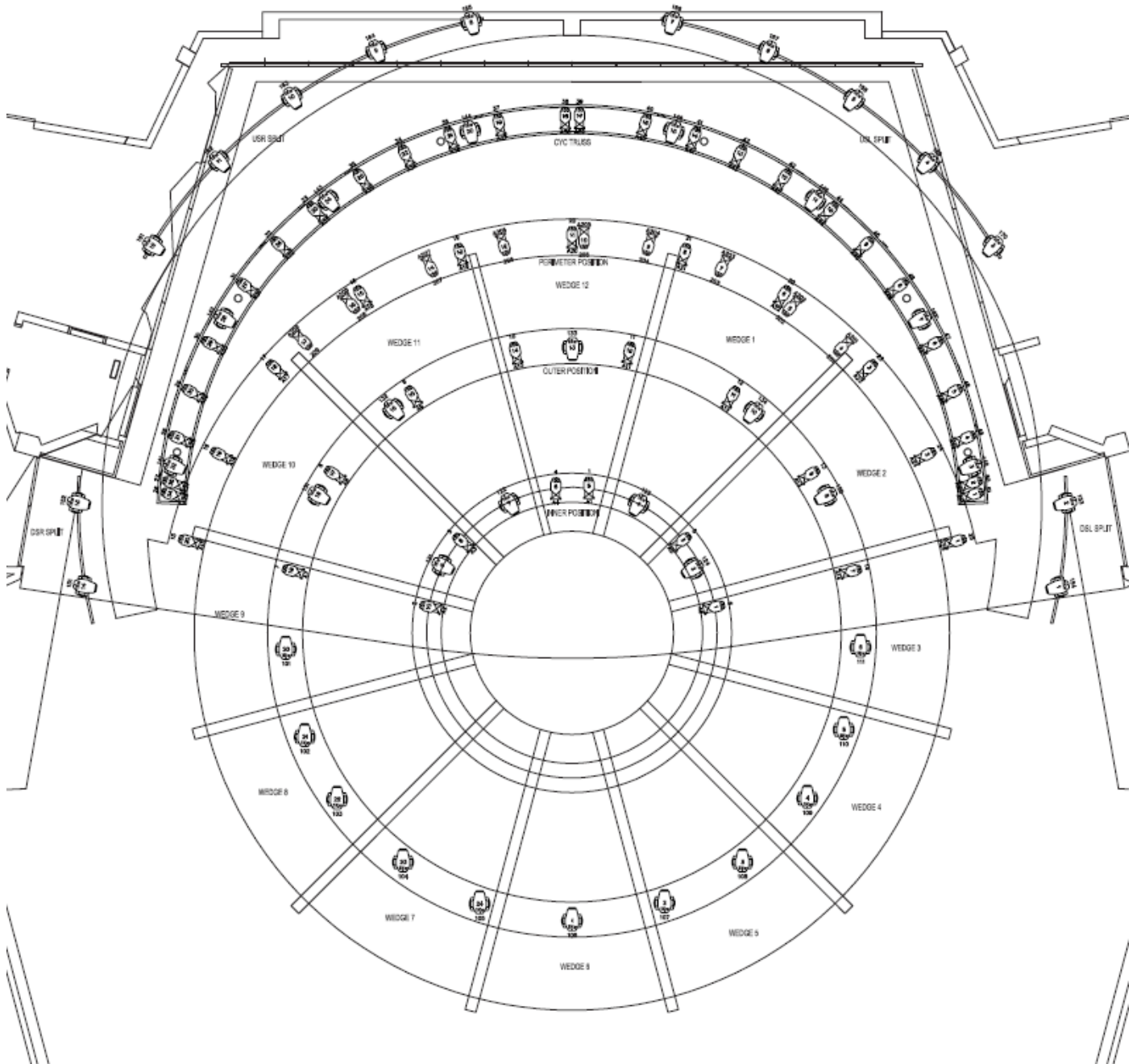
Rigging:

Rigging points exist in a grid-like pattern above the stage and above the auditorium for additional lighting or other uses. Each point is rated for 1500 pounds.

House Motors:

16 – Chainmaster MB4.3 I Ton Hoist 16 FPM w 65ft Chain with control system
House motors are inverted with the motor body in the ceiling.
Motors can be manually moved between points.

HOUSE LIGHTING PLOT



SOUND SYSTEM AND COMMUNICATIONS

Audio Power:

Location.....stage left
Capacity.....200AMPS
Phase.....3
Voltage.....120/208
Cycles.....60
Isolated ground.

Main Sound System

Centre Cluster:

The cluster consists of the following:

- 11 – Meyer JM-1P Upper Main
- 3 – Meyer UPQ-1P Middle Main
- 1 – Meyer UPQ-1P Down Fill
- 1 – Meyer UPQ-1P Center Rear Fill
- 2 – Meyer UPQ-2P Center Corner Fill

Speakers are flown at a fixed height and are in a cluster array above downstage center.

On-stage Speakers:

On-stage speaker stacks on custom cart, stage right and stage left, each containing:

- 4 – Meyer JM-1P
- 2 – Meyer 700HP Subwoofers (Standard configuration is 1 Subwoofer per side)

Distributed Support System:

Stage apron front fill.....7 – D & B Audiotechnik F9
Under Mezzanine (for rear Orchestra).....18 – Meyer UPM-1P Delay Fills

Amplification:

All speakers are self-powered excluding front fills.

Mixing Consoles:

Front of House Console

AVID S6L 32 with E6L 192 Engine (Movable between main booth and main floor mix)

Monitor Console

AVID S6L 24 with E6L 144 Engine

Stage Rack System 1 – Control Booth Location

- 1 - AVID Stage 64 I/O Rack
- 6 - AVID SRI-192 Analog Input Card
- 2 - AVID SRO-192 Analog Output Card
- 2 - AVID DSO-192 Digital Output Card

Stage Rack System 2 – Stage Left Rack Location

- 1 - AVID Stage 64 I/O Rack
- 6 - AVID SRI-192 Analog Input Card
- 2 - AVID SRO-192 Analog Output Card
- 2 - AVID DSO-192 Digital Output Card

Stage Rack System 3 – Stage Right Location

- 1 - AVID Stage 64 I/O Rack
- 1 - AVID DSI-192 Digital Input Card
- 1 - AVID DSO-192 Digital Output Card

Processing Equipment:

- 6 – Meyer Galileo 616
- 6 – Opticore X6R

Monitors:

12 – L’Acoustics X12 Single 12’ Monitor Wedge – Can be pole mounted

3 – L’Acoustics LAX4 4 Channel DSP Amplifier

Monitor System can be fed AES or Analog

Microphones:

AKG:

4- C621E (lectern mics)

CROWN:

3 - PCC
1 - PZM 6LP

CALREC:

4 CARDIOD

MILAB:

3 - DC96
5 - DC 73
3 - VM – 41

BEYER:

4 - 160
1 – M88

NUEMANN:

5 – KM184

SENNHEISER:

7 - MD421
6 – E904
4 - E906

RADIAL

6 – Pro DI

SHURE:

8 - SM 57
4 - Beta 57
2 – Beta 52
10 - SM 58
5 – Beta 58
1 - SM 87
4 – Beta 87
1 - PE 85 - Switch
1 - BG 3.1 Switch
2 - Beta 91

AUDIO TECHNICA

8 – 2020 Large Diaphragm Condenser

Other Sound Equipment:

Assorted mic cables, multi's, adapters, y-cords, splitters, D.I.s, transformers & splitters.

1 – US Audio Whirlwind media audio feed splitter.

40 assorted mic stands.

Wireless Microphone System:

Receivers

1 – Sennheiser EM 9046 SU System Unit Mainframe with Analog and AES Output Module

8 – Sennheiser EM9046 DRX Digital Receiver Module

2 – Sennheiser AD9000 Active Directional Antenna w 25ft cables

Transmitters

8 – Sennheiser SKM 9000 Handheld Transmitter with MMK 965 Capsules

8 – Sennheiser SK 9000 Body pack Transmitter with MKE 1-4 Lavalier Microphones

4 – Sennheiser Lemo to Instrument cable adapters

Note body packs are equipped with Lemo connectors

All transmitters are equipped with BA 60 and BA 61 rechargeable battery packs

Lobby and Portable Sound System

Lobby Main Sound: 4 – Meyer UPJ-1P speakers. 2 located on North Platform, 2 located on South platform. Speakers can operate independently or in tandem via Crestron control
4 – L’Acoustics 108P Powered Monitors. Can be used as monitors or pole mounted.
2 - EV SX300 with stands

Portable Mixing Systems:

2 complete systems each contained in a custom rolling rack with:

- 1 - APB Dynasonics Pro Rack – House H1020 with 12 + 4 input stereo mixer with 6 switchable AUX sends
- 1 – Denon DN-C635 CD Player
- 1 – Sennheiser 2000 Series Wireless Handheld and Lavalier Combo Kit

Additional Mixers:

- 1 - Soundcraft FX16, 16-input stereo mixer with reverb
- 1 – Behringer X32 Producer with SD16 Stage Box for 32 Inputs

Lecterns:

- 2 – custom gray lecterns with logo card rails
- 2 – Podium Pro VH1 lecterns steel and maple
- 1 – clear Lucite lectern

Intercom System:

A two-channel ClearCom system with 12 locations: lighting control booth, sound mixing booth, spot booth x 2, stage-left wing area, stage-right wing area and 6 belt packs and headsets

Touring Consoles:

Touring consoles are typically located house right at the rear of the right parterre seating section. This position offers a clear view of the stage. This position is 75’ from downstage center and is underneath the mezzanine over hang.

VIDEO SYSTEM

Power Source

Location.....Stage right
Capacity.....400AMPS
Phase.....3
Voltage.....120/208
Cycles.....60

Dual Screen 720p Video System:

Projectors: 2 – Panasonic PT-DZ12000U 3-Chip DLP Projector, 12000 lumens
2 – Panasonic ET-D75LE6 0.7:1 Wide Zoom Lens to create 16' x 9' image

Screens: 2 – Da-Lite 40398 16' wide x 9' high rear projection screens permanently hung upstage left and right of the organ.
2 – TorkStar motorized screen mechanism to allow screens to disappear in to ceiling when not in use.

Centre Stage 1080p Video System:

Projector: 1 – Barco HDX 20K Projector located in the projection booth in the back of house

Screen 1 – Da Lite 19' x 32' front projection screen with flying modification and floor stand

Playback

2 – LG 26" LCD Display to preview video in Control Room located off stage left
1 – Sony SSSP32FWSK Speaker kit for above LCD Display
1 – Sony BDP-S550 Blu-ray Player for playback of DVD/Blu-ray Disk
1 – HHB UDP-89 Professional Universal DVD/CD Player
2 – 15 inch MacBook Pros with PowerPoint, Keynote and Playback Pro. Each machine has DVI, VGA and Ethernet adapter as well as an external optical drive.

Comfort Monitors

2 – 28 inch Dell HD confidence monitors on low profile Ergomart stands

Switching & Control System

HD-SDI tie lines installed from the projection booth to the stage. There are 2 lines on each side of the stage running to the projection booth, and 2 cross-stage lines.

- 1 – Analog Way Eikos 2 Switcher with 19 inch preview monitor
- 2 – Extron MAV 48 AV Matrix Switcher
- 1 – Crestron QM-DA4 1x4 QuickMedia Distribution Amplifier
- 1 – Crestron TPS-12B Active Matrix Interactive Touch Panel Control
- 4 – Crestron QuickMedia Universal Receiver to distribute Computer, Video, Audio
- 1 – Crestron CEN-UPS1250 Uninterrupted Power Supply 1250W, 120V. Incl Battery Pack for system
- 1 – Crestron C2N-SPWS300 QuickMedia Power Supply & QM Distribution Amplifier
- 1 – Crestron ST-CNB Crestnet Distribution Block
- 2 – Extron 60-439-01 MDA 3V Three Output Composite Video Amplifier for Camera feeds
- 2 – Aja HD-SDI to HDMI converters
- 1 – Aja HD-SDI 6 output DA

Remote Cueing

- 1 – DSAN Perfect Cue for wireless remote AV cueing – 2 remotes available

Archival Video Recording

Camera:

- 1 – Panasonic AW-E650P motorized HD/SDI video camera located at the back of house below the centre balcony, capturing full stage shot with remote zooming and panning capability
- 1 - Static video camera located upstage left choir loft capturing conductor shot with 4:3 ratio SDI
- 1 – Panasonic AW-RP50 Remote Camera Controller located in SM booth on stage right

Recording

Capability to record a digital video file from the house feed with program sound embedded. Please note this recording is for archival purposes only. Any other use of captured audio or video material will be subject to IATSE Recording Premium Fee.

PROPS

Stage Drapes:

Black legs:	2- 8' x 24' 2- 8' x 29'-9" 2- 16' x 45'4" velour
Black Borders:	1- 4' x 54' 1- 4' x 44' 1- 5'x 43' 1- 2' x 44' velour
Black Drape:	2- 22' x 23' 2- 24'6" x 50' velour
Grey Traveler:	2 - 27' x 25'9"
Pipe & Drape:	14- 4' x 12' velour

Risers:

House choral seating risers are 72" x 34". There are 7 risers at each of 8", 23", 38", 53", and 68"
In addition there are 6, 4'x 8' x 1' high risers

Music Stands:

Music Stands.....	100
Conductor Stand.....	1
Music Stand Lights.....	60
Black Orchestra Chairs.....	200

Musical Instruments:

1 - Steinway D (Hamburg) grand 9-foot
1 – Steinway D (New York) grand 9-Foot
1 – Yamaha C9 (Previously owned by Glenn Gould) in main lobby
1 - Heintzman upright piano (Pitch A440) in an artist dressing room
2 - Yamaha upright pianos in artist dressing rooms
1 - Full concert pipe organ with remote console option
1 - Heintzman Baby Grand 6'
All other pianos by arrangement.

Piano Tuner:

Pianos tuned by house tuner as required.

DRESSING ROOMS AND LOUNGE AREAS

Dressing Rooms

5 -Artist dressing rooms located at stage level

A - 13'6" x 12	2 people comfortably 3 max	Room A and B share a washroom
B - 14'6" x 13'6"	2 people comfortably 3 max	
C - 14'6 x 14'	2 people comfortably 4 max	Private washroom (Piano)
D - 20' x 11'	2 people comfortably 3 max	Private Washroom (Piano and Kitchenette)
E - 9'6" x 9'	2 people comfortably 2 max	Private Washroom (often used as a production office)

Each dressing room is equipped with a telephone for local calls only. Long-distance dialing via credit cards or dial-codes can be arranged.

Choir Change Rooms:

There are six other large change areas for men and women. They are located on the stage level left and right and may be used based upon individual show needs

Lounges:

Musicians lounge located at stage level, directly behind upstage center
15' x 17'

Green Room **
37' x 17'

Pickering Room **
33' x 26'

Rehearsal room **
67' - 10" x 42' - 6"

UNION AFFILIATION

Roy Thomson Hall operates within the jurisdiction of the International Alliance of Theatrical Stage Employees & Moving Picture Technicians, Artists and Allied Crafts (I.A.T.S.E. Local 58).
For further information contact the Production Manager.